



SOUTHSIDE FAMILY
NURTURING CENTER

Breaking Cycles and Building Equity in
Health and Education for Young Children
and their Families

SEE OUR IMPACT



United Nations Sustainable Development Goals
addressed with this program:



THE SOCIAL IMPACT OF Southside Family Nurturing Center (SSFNC)

This impact value map shows the total organization expenses required to deliver the Therapeutic Early Childhood Education and Home Visiting programs, and the projected benefits generated by the families served.

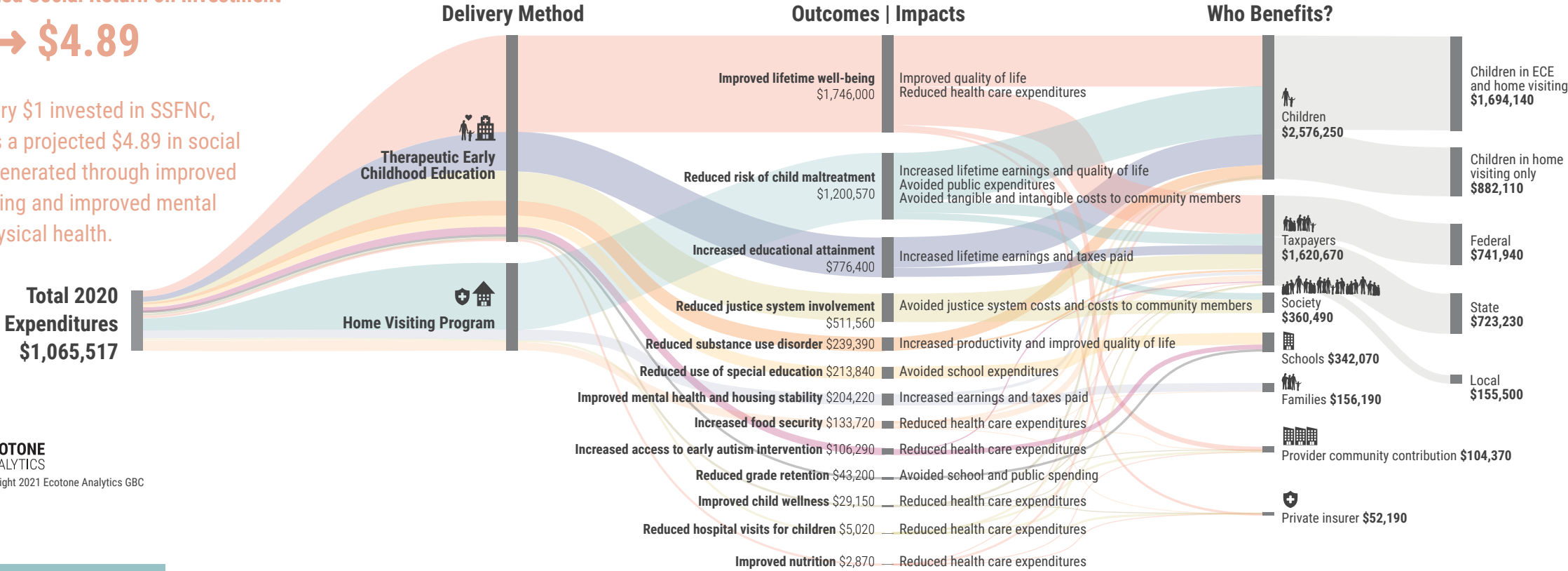
Projected Social Return on Investment

\$1 → \$4.89

For every \$1 invested in SSFNC, there is a projected \$4.89 in social value generated through improved well-being and improved mental and physical health.

ECOTONE ANALYTICS
TM & © Copyright 2021 Ecotone Analytics GBC

Estimated Return on Investment \$5,212,230



Southside Family Nurturing Center
FIVE DIMENSIONS OF IMPACT



- WHAT:** A high-quality, therapeutic early childhood education (ECE) and home visiting program, supporting equity in child and family health and education
- WHO:** Serving multi-cultural children ages 15 months to 5 years in ECE program, and parents / caregivers and children 0 to 18 years in the home visiting program. 100% of families served are BIPOC, living in poverty and at-risk in south Minneapolis
- HOW MUCH:** In 2020, the SSFNC home visiting program served 49 families, supporting a total of 219 family members. The center-based children's program served 39 children in 2020
- CONTRIBUTION:** SSFNC's curriculum and services are evidence-based, creating additional value beyond what would otherwise be achieved
- IMPACT RISK MITIGATION:** SSFNC combines a therapeutic learning environment for children's social-emotional, physical and cognitive development with adaptive, supportive services for family members to maximize participation and respond to barriers to well-being. Emphasis on the whole family unit through continuous engagement over 3 to 7 years protects long-term impact. Low child:teacher ratios ensure optimal delivery of evidence-based curriculum

LOGIC MODEL

THEORY OF CHANGE: Advance health and education equity via access to high-quality, therapeutic early childhood education and home visiting services

INPUTS	ACTIVITIES	OUTPUTS	SHORT TERM OUTCOMES	INTERMEDIATE OUTCOMES	LONG TERM OUTCOMES	IMPACTS
<ul style="list-style-type: none">Center-based programHome visiting / family supportive servicesEvidence-based curricula and assessment toolsSSFNC team: highly trained, experienced and culturally relevant staff reflective of population served and on-site partnersFunding: government grants, individual donors and family foundations	<ul style="list-style-type: none">Half-day, therapeutic and trauma-informed Early Childhood EducationOn-site speech, occupational, music, play therapy plus early autism interventionFamily, self-directed goal planningHome visits including resources and referralsParent support and education groupsBi-monthly family events	<ul style="list-style-type: none">Children are up-to-date with immunizationsChildren complete annual well- child checkupsParents demonstrate positive, responsive parenting techniquesParents actively participated in regular home visiting (on average 4 hours/ month)	<ul style="list-style-type: none">↑ Access to culturally-relevant, trauma-informed services and resources↑ Progress in all areas of development↑ Access to fresh fruit and vegetables↑ Parenting knowledge↑ Sense of support and empowerment↑ Goal development and pursuit↑ Home safety attitudes	<ul style="list-style-type: none">↑ Sense of community↑ Food security and nutrition↓ In community violence↑ Age-appropriate social-emotional and development skills↑ Readiness for Kindergarten↑ Positive parenting↑ Promotion of their child's language development↑ Positive, shared experiences with their child	<ul style="list-style-type: none">↑ Health, safety and home environment↑ Educational attainment↑ Respect and support for other children↑ Future earnings↓ Arrests for drug, property and violent crimes↑ Family stability↑ Maternal health↑ Mental health	<ul style="list-style-type: none">Increased equityImproved multi generational health, safety and well-beingIncreased quality of life
Total 2020 Expenditures: \$1,065,517			Estimated Return on Investment: \$5,212,230			

All

Child-centric

Families / Caregivers

KEY PERFORMANCE INDICATORS (KPIs)
Improvements in the following areas:

SCALE KPIs

- # of children ready for kindergarten
- # of therapy sessions delivered
- # of children receiving Early Autism Intervention

QUALITY KPIs

- % of families with history of child abuse/neglect
- % of children showing progress in all areas of development
- % of families utilizing referrals

LETTER FROM SOUTHSIDE FAMILY NURTURING CENTER

Dear Friends and Change Makers,

We know the impact of prevention and early intervention in the early years, prenatal to five. If we are willing to invest, we can literally tip health and education scales throughout a person's life and into the next generation.

Ensuring that every child – inclusive of race, culture and socioeconomic status – is nurtured physically, emotionally, cognitively and socially is vital to the health of our community and our future. Given what we know about health and education disparities in BIPOC communities in Minnesota, we need to invest like we have never invested before. Our holistic, dual generation, trauma-informed model is needed now more than ever.

We extend our wholehearted thanks to everyone investing in our mission and to Ecotone Analytics for working with us to better share Southside Family Nurturing Center's (SSFNC) social return on your investment.

We invite aligned individuals and communities committed to promoting health and education equity to reach out to partner with SSFNC.

In solidarity,

Julie Ellefson, Executive Director - julieellefson@ssfnc.org



TESTIMONIALS



"My son couldn't communicate with me and I couldn't understand his needs before coming to Southside. Now if he wants something, he asks for it. As the people say... I was knocking on doors, wandering in despair, looking for help for my child who couldn't speak. That was the past, now we are in the present with hope for continued progress. I like Southside because it is a small school, there are fewer children, they have a lot of patience, and they dedicate time to every child. Thank you!"

MARIA DE LA LUZ IBARRA, Parent



"For my daughter who is an only child, going to school at SSFNC feels more like SSFNC is her family. She gets that interaction she can't get at home; that education, that sharing, and that empathy for one another. Children are getting all of those experiences that they need to move forward in life."

KAMILAH WILSON, Parent



"It is so meaningful to support Southside's work. I'm inspired by the long-term positive effects that this dual generation program offers. Happy children and proud parents are empowered with lifetime skills and confidence in a safe place."

JUDITH MATTISON, Committed Donor

Disclaimer: This assessment addresses the impact measurement and management systems, practices, and metrics employed by the impact assessment consultants. It does not address financial performance and is not a recommendation to invest. Each investor must evaluate whether a contemplated investment meets the investor's specific goals and risk tolerance. Ecotone Analytics GBC (Ecotone), its staff, and Ecotone analysts are not liable for any decisions made by any recipient of this assessment.

This assessment relies on the written and oral information provided by the analyst at the time of the Ecotone analysis. Under no circumstances will Ecotone, its staff, or the Ecotone analysts have any liability to any person or entity for any loss of damage in whole or in part caused by, resulting from, or relating to any error (negligent or otherwise) or other circumstances related to this assessment. The accompanying technical document is an integral part of this Impact Assessment.

The Ecotone asymmetrical SROI flow diagram is a trademark of Ecotone Analytics: TM & © Copyright 2021 Ecotone Analytics GBC
Prepared by Ecotone Analytics. Visit ecotone-partners.com

Impact Management Project: Creative Commons Attribution-NoDerivatives and UN SDGs un.org/sustainabledevelopment

